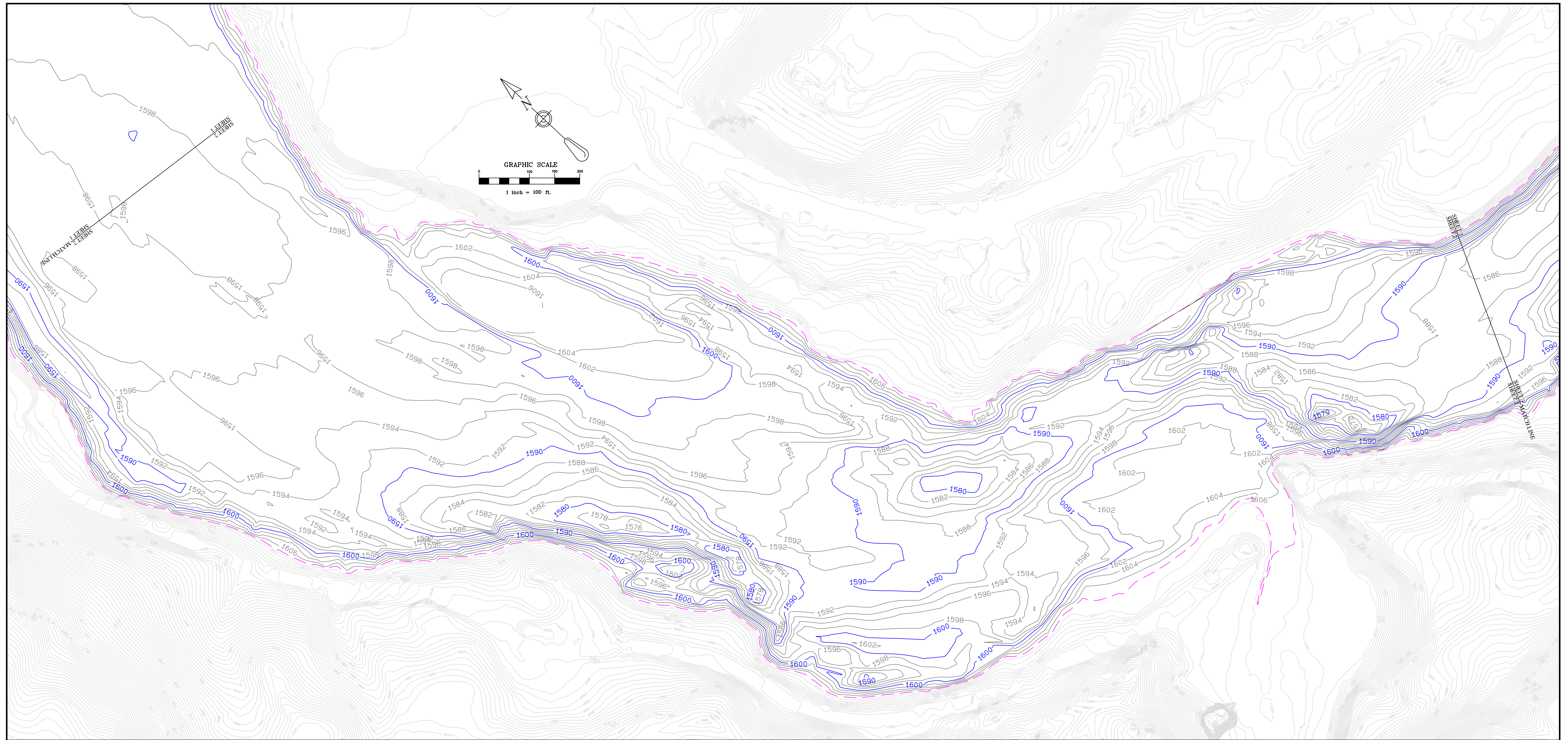


Avista Corporation Nine Mile Reservoir Bathymetric Survey

Spokane River
Sheet 2 of 10

Data Collected: August 24-25, 2009
Drawing Date: May 2011



- NOTES:**
- HORIZONTAL DATUM: NORTH AMERICAN DATUM OF 1983-91, STATE PLANE COORDINATES, WASHINGTON NORTH ZONE.
 - UNITS: U.S. SURVEY FEET
 - VERTICAL DATUM: NORTH AMERICAN VERTICAL DATUM 1988 (NAVD88). SOUNDINGS ARE IN FEET AND INDICATE ELEVATIONS IN REFERENCE TO NAVD88. NAVD88 VERTICAL DATUM WAS ESTABLISHED FROM WSDOT SURVEY MONUMENTS PRN33-1, PRN32-24, GP33291-17 AND GP33291-16.
 - CONTOUR INTERVAL: 2 FOOT.
 - ALL HORIZONTAL POSITIONS WERE PROVIDED BY A HEMISPHERE VS-110 DUAL-ANTENNAE DGPS/HEADING RECEIVER.
 - SOUNDINGS WERE COLLECTED USING A KNUDSEN 320M SINGLEBEAM SONAR. DATA PROCESSING WAS COMPLETED USING HYPACK SOFTWARE.
 - THIS BATHYMETRIC SURVEY IS REPRESENTATIVE OF THE GENERAL CONDITION OF THE RIVERBED AT THE TIME OF THE SURVEY. THE CONDITION OF THE BOTTOM MAY CHANGE AT ANY TIME AFTER THE DATE OF THIS SURVEY.
 - ALL BATHYMETRIC DATA WAS COLLECTED IN ACCORDANCE WITH THE U.S. ARMY CORPS OF ENGINEERS HYDROGRAPHIC SURVEY MANUAL EM-112-02-1003 (JANUARY 2002). SURVEY CLASSIFICATION: NAVIGATION AND DREDGING SUPPORT SURVEYS, BOTTOM CLASSIFICATION OF SOFT.
 - AVERAGE WATER SURFACE ELEVATION AT TIME OF SURVEY: 1608.0' (NAVD88). PLEASE NOTE THIS CORRELATES WITH AN ELEVATION OF 1606.5' IN THE WASHINGTON WATER POWER (WWP) VERTICAL DATUM.
 - LIDAR FLOWN MAY 23-30, 2009, DURING WHICH THE AVERAGE WATER SURFACE RANGED FROM 1609 FT. TO 1610 FT. (NAVD88).

LEGEND:
— INDICATES 1608 FT. SHORELINE CONTOUR

THIS HYDROGRAPHIC SURVEY WAS COMPLETED BY AN AMERICAN CONGRESS ON SURVEYING AND MAPPING CERTIFIED HYDROGRAPHER.
James W. Glaeser
JAMES W. GLAESER
AMERICAN CONGRESS ON SURVEYING AND MAPPING
CERTIFIED HYDROGRAPHER #222
DATE 6-23-2011

Disclaimer: The information shown in the map is compiled from various sources and is subject to revision without notice. Avista Corporation does not warrant the accuracy, reliability or the timeliness of any information published herein. All information is provided "as is" without warranty of any kind and, in particular, no representation or warranty, expressed or implied, is made as to the accuracy, timeliness or completeness of such information. This map is an advisory tool only and intended to be used for general public inquiry. Any person or entity that relies on any information contained in this map does so at his or her own risk.

VERTICAL DATUM = NAVD 88
(SEE NOTES 3 AND 9)



NORTHWEST HYDRO INC.
31 COUGAR CREEK RD.
SKAMANIA, WA 98648
PH (509) 427-5081
EMAIL: NWHYDRO@SAW.NET

AVISTA CORPORATION SPOKANE, WASHINGTON			
AS-NOTED	05-30-11	APPROVED	
SCALE	DATE	<i>Bruce Howard</i>	
DESIGN: JWG	CHECKED: <i>SW</i>	6-28-2011	
DRAWN: JWG	NOTED: <i>MS</i>	DATE	
CHECKED: JWG	NOTED: <i>CL</i>	MFG. DWG. NO.:	
DWG. NO.: 205E-40-405-02-02			