

AVISTA CORPORATION

FIVE-YEAR FISHERY PROTECTION AND ENHANCEMENT PLAN 2015 - 2019

IDAHO 401 CERTIFICATION, SECTION VII

SPOKANE RIVER HYDROELECTRIC PROJECT
FERC PROJECT No. 2545

Prepared By:
Avista Corporation

April 10, 2015

[Page intentionally left blank]

TABLE OF CONTENTS

1.0	INTRODUCTION	1
1.1	Background	1
1.2	Post Falls HED.....	1
2.0	FIVE-YEAR PLAN	3
2.1	License Article 409	3
2.2	Reporting and Updating.....	3
2.3	Funding	4
3.0	POTENTIAL PROTECTION AND ENHANCEMENT MEASURES	5
3.1	Tributary Habitat Conservation, Enhancement and Reconnection.....	5
3.2	Tributary Monitoring, Management and Restoration	6
3.3	Coeur d’Alene Lake Habitat Enhancement and Protection	6
3.4	Exotic Species Suppression	6
3.5	Recreation Fishery Evaluation and Enhancement	6
3.6	Education and Outreach.....	7
4.0	PRIORITIZED PROJECTS AND MEASURES.....	8
4.1	Selection and Priority Criteria	8
4.2	Prioritized Measures	9
4.3	Annual Work Plans	9
5.0	PROJECTED FIVE-YEAR IMPLMENTATION SCHEDULE	10
6.0	ENDANGERED SPECIES ACT.....	14
7.0	REFERENCES	15

FIGURES

Figure 1: Post Falls Project Area

APPENDICES

Appendix A: Consultation Record with IDFG

Appendix B: Fishery Project Ranking Criteria

1.0 INTRODUCTION

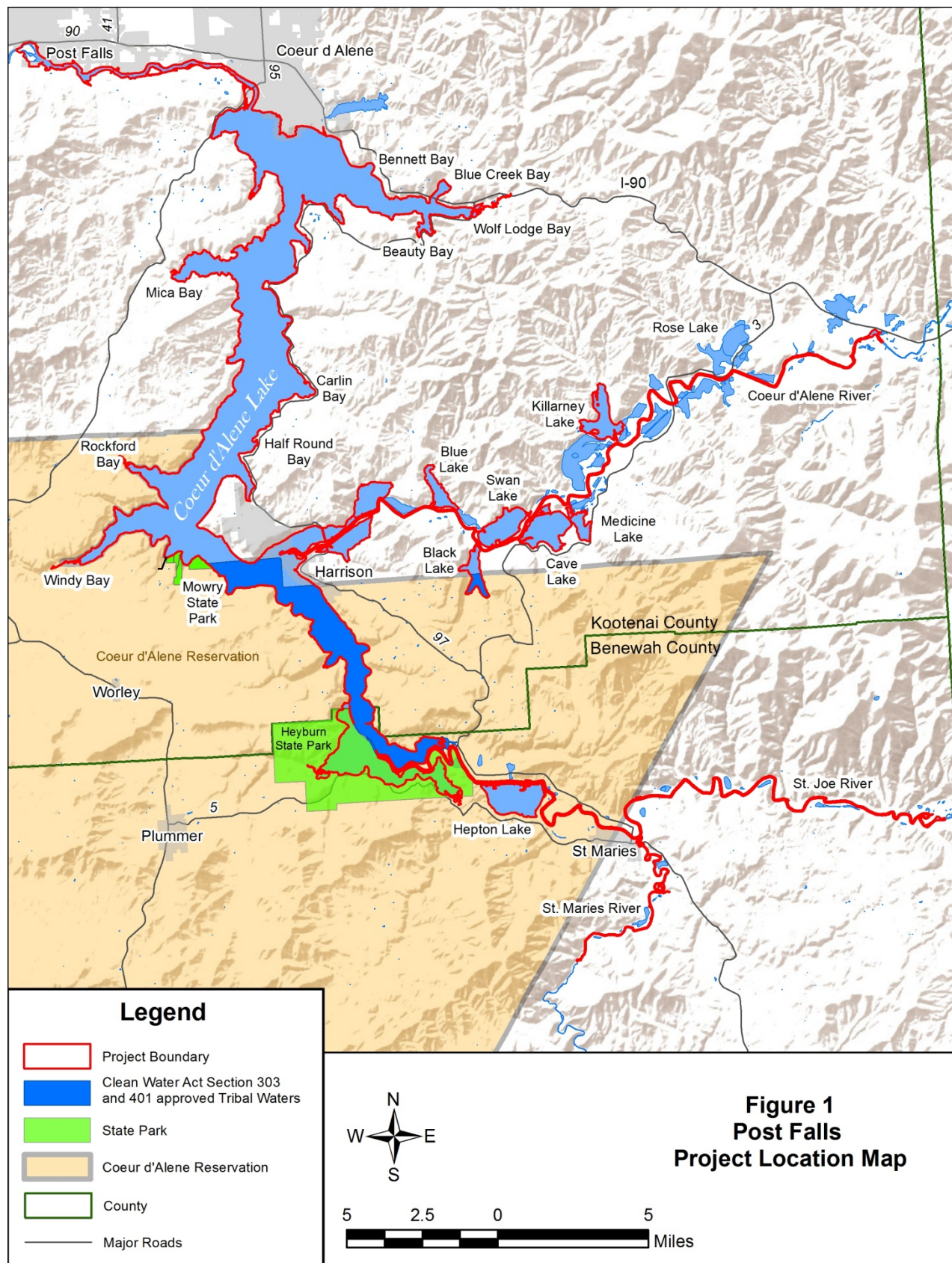
1.1 Background

On June 18, 2009, the Federal Energy Regulatory Commission (FERC) issued a new License for Avista Corporation's Spokane River Project, FERC Project No. 2545-091 (Project). The new License became effective on June 1, 2009 and includes operation of the Post Falls Hydroelectric Development (HED) in Idaho as a component of the Project (FERC 2009). Ordering Paragraph D of the License incorporated the Idaho Department of Environmental Quality's (IDEQ) Certification Conditions under Section 401 of the Federal Clean Water Act (Certification) (IDEQ 2008). The Certification can be found in Appendix A of the License.

The Certification states in section VII that within the first year after the new License becomes effective, Avista shall submit a fishery protection and enhancement plan to the Idaho Department of Fish and Game (IDFG) for approval. Article 409 of the License requires that the provisions for the FERC approved "Coeur d'Alene Lake Fisheries Public Education and Outreach Program" (Avista 2010a) will be incorporated into the plan. Avista submitted, and on May 18, 2010, the IDFG approved, the "Five-Year Fishery Protection and Enhancement Plan" (Avista 2010b), which Avista implemented through December 2014. The Certification also states that every five years after the License becomes effective, and continuing for the term of the License, Avista shall update and revise the plan to identify and describe measures to be carried out within the following five years.

1.2 Post Falls HED

The Post Falls HED includes three dams located on the Spokane River about nine miles downstream from the outlet of Coeur d'Alene Lake (Lake), and controls water levels in the Lake and the lower tributaries to it, except during winter and through most of the spring run-off period. The HED Project boundary encompasses the Lake, the Spokane River upstream of the Post Falls dams, and the lower reaches of the St. Joe, Coeur d'Alene and St. Maries rivers to the normal full pool elevation of 2,128.0 feet (Figure 1). The Post Falls HED area includes the rivers and tributaries outside of the Project boundary.



2.0 FIVE-YEAR PLAN

This “Five-Year Fishery Protection and Enhancement Plan 2015- 2019” (Plan) is a requirement of Appendix A; Exhibit 1 of the License and has been revised and updated to replace the 2010-2014 five-year plan (Avista 2010b). It describes a prioritized set of measures to be implemented between 2015 and 2019. Components of the Plan include habitat protection and enhancement, fish population assessment and monitoring, and education/outreach measures to benefit westslope cutthroat trout *Oncorhynchus clarki lewisi* and bull trout *Salvelinus confluentus* in the Project area and/or wild rainbow trout *Oncorhynchus mykiss* in the Spokane River downstream of the Post Falls HED. Project related activities may include riparian habitat restoration and protection; acquisition or long-term protection of private lands where aquatic habitat important to bull trout and westslope cutthroat trout exists; suppression of exotic species; data collection; fish stocking programs to deflect recreational angling pressure away from native trout populations; and strategies to prevent illegal harvest of wild rainbow trout from the Spokane River.

This Plan has been written in consultation with IDFG, with the consultation record included in Appendix A. Additionally, and in accordance with the License, IDFG shall consult with IDEQ and the U.S. Fish and Wildlife Service (USFWS) regarding the Plan. Avista will provide the IDFG approved Plan to FERC, and upon FERC approval, will implement the Plan.

2.1 License Article 409

This Plan includes provisions to address License Article 409, which requires Avista to develop a fisheries public education and outreach program. Avista consulted with the IDFG, the Coeur d’Alene Tribe and the USFWS to develop the “Coeur d’Alene Lake Fisheries Public Education and Outreach Program” (Program) (Avista 2010a). The Program was approved by FERC on December 6, 2010 and is implemented through this Plan.

2.2 Reporting and Updating

The IDFG approved the first five-year plan on May 18, 2010, which was the beginning of the initial reporting period. Every five years, and continuing for the term of the new License, Avista shall update and revise the Plan to describe those measures to be implemented during the next

five years. Avista submits the updated plans to IDFG for review and upon their approval submits the updated plans to FERC for approval. Future plans will be updated, approved and implemented in the same manner as this Plan.

Avista also prepares summary reports every five years, as specified in Appendix A; Exhibit 1 of the License. The summary reports document implementation of the measures described in the plans, the overall results achieved during the previous five years, and the general nature of the activities that will be implemented during the next five-year period. The reports shall be submitted to IDFG and IDEQ within six months following each five-year reporting period.

2.3 Funding

Avista shall make \$150,000 available on an annual basis to implement the measures identified in the approved Plan. Implementation of the Plan and expenditure of funds for specific projects will be governed by Appendix A; Exhibit 1 of the License as follows:

By the first July 1st after the New License becomes effective, and every July 1st thereafter for the term of the New License, Avista shall make available \$150,000 to implement this condition. Any funds not expended within one (1) year shall carry over and can be used in the following year consistent with Section VIII.A. of IDEQ's 401 certification. Any funds not expended for the specific measures outlined in the Plan may also be used in accordance with Section VIII.A. of IDEQ's 401 certification. Any funds carried over shall be in addition to the annual \$150,000 provided by Avista. The fact that funds have not been expended in one (1) year and are carried over does not diminish Avista's responsibility for providing \$150,000 annually for the term of the New License. Provided, however, that funds which are carried over and not expended within the subsequent five (5) years shall no longer be available in accordance with Section VIII.A. of IDEQ's 401 certification. The funding provided by Avista shall be used to pay for work by Avista, IDFG, or their contractors for the planning, implementing, or reporting components of this condition. Avista's internal administrative costs to implement this condition, shall be part of Avista's internal overall costs for license implementation and compliance, and will not be supported by the funding identified above. The \$150,000 annual payment shall be adjusted in accordance with Section VIII.A of IDEQ's 401 certification.

Budgets are updated annually to identify funding obligations, expenditures to date, and carry-over dollars available for the current year. Budgets are reviewed while developing the annual work plans with the IDFG, IDEQ and the USFWS.

3.0 POTENTIAL PROTECTION AND ENHANCEMENT MEASURES

This section identifies general categories of measures that may be implemented for fish habitat enhancement and protection, fish population assessment and monitoring, and education and outreach actions. These include:

- Riparian habitat restoration and protection projects;
- Acquisition or other long-term protection of private lands where aquatic habitat important to bull trout and westslope cutthroat trout exists;
- Collection of required or relevant baseline data;
- Suppression of exotic species;
- Fish stocking programs to deflect recreational angling pressure away from wild populations of trout; and
- Strategies to prevent illegal harvest of wild rainbow trout from the Spokane River.

These potential measures were initially identified in the “Coeur d’Alene Lake Basin Bull Trout and Westslope Cutthroat Trout Protection, Mitigation, and Enhancement Plan” (Kleinschmidt 2004) and are summarized below. Selected projects may include portions or subsets of these measures.

3.1 Tributary Habitat Conservation, Enhancement and Reconnection

This measure provides for protection and enhancement of stream habitats in the Post Falls HED area. Tributary stream and riverine habitats represent important spawning, rearing, and other life history habitats for both resident and migratory native fish species. Habitat may be protected through purchase of adjacent lands, conservation easements, watershed restoration, reconnection of fish passage or other measures. The measures will emphasize restoring and protecting particularly valuable areas such as key spawning sites or areas with groundwater influence that provide critical cold water refugia.

Blockages may be physical or natural conditions that restrict migration or movement of native fish and may provide habitat for competitive or predatory species. Measures may include channel or stream bank modification, planting and maintenance of buffer strips, exclusion of

livestock, addition of large woody debris and other structures to provide cover and prey habitat or otherwise increase stream habitat complexity. Providing passage past roads, culverts or other barriers will provide a means to re-connect fish to previously blocked habitat.

3.2 Tributary Evaluation, Management and Restoration Monitoring

Fish population and habitat evaluations of tributaries to the Post Falls HED area may be necessary to fill information gaps or determine conservation or restoration opportunities to enhance native fish species. Evaluations may be needed to determine the current habitat condition and/or the fish populations in tributaries to Project waters that historically supported spawning and rearing habitat for native salmonid species.

In addition to evaluating the tributaries as mentioned above, monitoring plans will be developed as appropriate to define goals and objectives, restoration and protection monitoring efforts, information and education measures, budgets, schedules and other relevant information.

3.3 Coeur d'Alene Lake Habitat Enhancement and Protection

Enhancement and protection of lake shores, bays or tributary mouth habitat may be implemented to benefit native salmonid species in Coeur d'Alene Lake. Measures may include placement of rock or wood structure or the planting of native vegetative near localized shoreline habitat to improve native salmonid survival or migration.

3.4 Exotic Species Suppression

Programs to control or suppress non-native fish species may be implemented to minimize their impacts to native species (Rich 1992; Weitkamp 2003). These measures may occur near tributary mouths, along shoreline habitats or other specified locations.

3.5 Recreation Fishery Evaluation and Enhancement

Measures may support recreational fishery enhancements that either directly benefit or reduce risk to native species. Proposed recreation fishery projects will be consistent with native fish restoration goals, and will proceed only when it is determined they do not conflict with native

salmonid restoration efforts or the requirements for federally listed species. Measures may include stocking or creating “catch-out” ponds near communities or heavily used recreation areas, improving habitat and non-native sport fisheries. Population enhancement or control measures that benefit target species may also be implemented.

3.6 Education and Outreach

On December 6, 2010 FERC approved Avista’s “Coeur d’Alene Lake Fisheries Public Education and Outreach Program” (Program) to address Article 409 of the License (Avista 2010a). Provisions to implement the Program measures are incorporated into this Plan.

4.0 PRIORITIZED PROJECTS AND MEASURES

4.1 Selection and Priority Criteria

Avista, in consultation with the IDFG, IDEQ and USFWS developed general selection criteria for all projects and measures that will be implemented through this Plan. The general selection criteria include the following:

- Projects or actions that are associated with the Post Falls HED for bull trout and/or westslope cutthroat trout in the Coeur d'Alene Lake basin, and/or wild rainbow trout in the Spokane River downstream of the Post Falls Dam;
- Projects or actions having significant potential to restore or enhance habitat for adfluvial bull trout and/or adfluvial westslope cutthroat trout in the Coeur d'Alene Lake basin, or wild rainbow trout populations in the Spokane River;
- Projects that enhance benefits for multiple native salmonid species;
- Projects or actions that have significant potential to restore or enhance habitat for bull trout and/or westslope cutthroat trout;
- Projects that provide for recreational fishery enhancements and evaluation;
- Projects consistent with existing management and recovery plans; and
- Other programs or actions deemed appropriate as agreed by the cooperating parties.

Potential projects that are selected using the above are further prioritized using the Fishery Project Ranking Criteria, which is included as Appendix B of this Plan. The ranking criteria are used to numerically rank and prioritize project proposals for relative importance and consistency with the Plan. Priority will be given to projects that enhance benefits for multiple native salmonids, and, fewer, but more effective efforts are preferred over a larger number of activities that may not be financially or logistically sustainable. A public education and outreach measure is prioritized as an annual work plan to satisfy the requirements of the License.

4.2 Prioritized Measures

Prioritization is based on an understanding of the baseline information, the known presence of contaminated sediments, consistency with current management and recovery plans (USFWS 2014, 2010; IDFG 2014, 2013a, 2013b), and the most urgent need for fishery protection and enhancement (FERC 2007; McIntyre and Rieman 1995; PBTTAT 1998; Weitkamp 2008; 2003). Potential projects are evaluated by the IDFG, USFWS, IDEQ and Avista and then prioritized and selected according to the ranking and evaluation criteria identified in section 4.1 to ensure an objective evaluation process.

4.3 Annual Work Plans

Appendix A; Exhibit 1 of the License states that Avista shall consult with IDEQ, USFWS and IDFG regarding those measures to be carried out annually. As such, Annual Work Plans (AWP) are developed during the first quarter of each year to be approved for implementation by April 30.

The AWP provide details on the set of measures implemented within the specified calendar year. The purpose, goals and objectives, and the specific tasks, with detailed schedules, budgets, funding sources, and management activities are described in each AWP. Project budgets identify anticipated expenditures, cost share commitments or other secured funding sources. The AWP are implemented by Avista after approval from the IDEQ, USFWS and IDFG, securing required funding, establishing partnerships, obtaining necessary permits, and completing any ESA consultation, if required. Changes to the AWP may occur if agreed to by IDEQ, USFWS, IDFG and Avista. Additionally, the “Coeur ‘Alene Lake Fisheries Public Education and Outreach Project AWP” is approved annually to implement the measures of License Article 409.

5.0 PROJECTED FIVE-YEAR IMPLEMENTATION SCHEDULE

Avista, in cooperation with the IDFG, IDEQ and USFWS, plans to implement the following projects over the five-year period from 2015 through 2019. These projects may be modified, changed, or extended through the annual approval process, depending on the results achieved, new information, or as new opportunities arise.

New and/or additional fishery protection or enhancement projects may be identified and/or implemented as opportunities arise and that are consistent with the potential activities described in the Plan. Projects that are identified will be evaluated in accordance with the Plan and considered for implementation.

The AWP's that will be carried out for the 2015 to 2019 period include:

Year One (2015)

Coeur d'Alene Lake Fisheries Public Education and Outreach Project

This project is intended to educate and inform the public about fishery measures implemented at the Post Falls HED and about the measures to minimize public impacts on native fish. Actions include maintenance and revision of the existing signs, kiosks, bulletin boards and other updates as appropriate. Specific tasks and the budget will be determined and approved in the AWP.

Native Salmonid Habitat Protection and Enhancement Project

This project benefits adfluvial and fluvial native salmonid westslope cutthroat trout, bull trout and other species through the protection and conservation of key habitat. An active search to identify potential properties for easements or restoration opportunities will be pursued as appropriate. This project may include a partnership program with the U.S. Forest Service to restore fish passage and habitat in Red Ives Creek. Specific tasks and the budget will be determined and approved in the AWP.

Recreation Fishery Project

This project is expected to provide recreational angling opportunity and reasonable public access near the Post Falls Project area. This includes catch-out-pond maintenance and fish stocking to help provide alternative angling opportunities that will not conflict with native salmonid restoration efforts or the requirements of federally listed species. The AWP includes stocking trout into Spicer Pond, Steamboat Pond and Falls Park Pond. Specific tasks and the budget will be determined and approved in the AWP.

Year Two (2016)

Coeur d'Alene Lake Fisheries Public Education and Outreach Project

This project is intended to educate and inform the public about fishery measures implemented at the Post Fall HED and about the measures to minimize public impacts on native fish. Actions include maintenance and revision of the existing signs, kiosks, bulletin boards, revising and printing the Spokane River Drainage brochure and other updates as appropriate. Specific tasks and the budget will be determined and approved in the AWP.

Native Salmonid Habitat Protection and Enhancement Project

This project benefits adfluvial and fluvial native salmonid westslope cutthroat trout, bull trout and other species through the protection and conservation of key habitat. An active search to identify potential properties for easements or restoration opportunities will be pursued as appropriate. This project may include a partnership program with the U.S. Forest Service to restore fish passage and habitat in Red Ives Creek. Specific tasks and the budget will be determined and approved in the AWP.

Recreation Fishery Project

This project is expected to provide recreational angling opportunity and reasonable public access near the Post Falls Project area. This includes catch-out-pond maintenance and fish stocking to help provide alternative angling opportunities that will not conflict with native salmonid restoration efforts or the requirements of federally listed species. The AWP includes stocking trout into Spicer Pond, Steamboat Pond and Falls Park Pond. Specific tasks and the budget will be determined and approved in the AWP.

Fishery Assessment and Monitoring Project

This project benefits adfluvial and fluvial native salmonid westslope cutthroat trout, bull trout and other species through research, evaluation and monitoring of habitat and/or populations. Assessment or monitoring actions to identify specific resource protection or enhancement projects may be pursued. The IDFG has identified habitat use and movement of westslope cutthroat trout in the St. Maries River and population trend assessments in Coeur d'Alene Lake as a potential project. Specific tasks and the budget will be determined and approved in the AWP.

Year Three (2017)

Coeur d'Alene Lake Fisheries Public Education and Outreach Project

This project is intended to educate and inform the public about fishery measures implemented at the Post Fall HED and about the measures to minimize public impacts on native fish. Actions include maintenance and revision of the existing signs, kiosks, bulletin boards and other updates as appropriate. Specific tasks and the budget will be determined and approved in the AWP.

Native Salmonid Habitat Protection and Enhancement Project

This project benefits adfluvial and fluvial native salmonid westslope cutthroat trout, bull trout and other species through the protection and conservation of key habitat. An active search to identify potential properties for easements or restoration opportunities will be pursued as appropriate. This project may include a partnership program with the U.S. Forest Service to restore fish passage and habitat in Red Ives Creek. Specific tasks and the budget will be determined and approved in the AWP.

Recreation Fishery Project

This project is expected to provide recreational angling opportunity and reasonable public access near the Post Falls Project area. This includes catch-out-pond maintenance and fish stocking to help provide alternative angling opportunities that will not conflict with native salmonid restoration efforts or the requirements of federally listed species. The AWP includes stocking trout into Spicer Pond, Steamboat Pond and Falls Park Pond. Specific tasks and the budget will be determined and approved in the AWP.

Fishery Assessment and Monitoring Project

This project benefits adfluvial and fluvial native salmonid westslope cutthroat trout, bull trout and other species through research, evaluation and monitoring of habitat and/or populations. Assessment or monitoring actions to identify specific resource protection or enhancement projects may be pursued. The IDFG has identified habitat use and movement of westslope cutthroat trout in the St. Maries River and population trend assessments in Coeur d'Alene Lake as a potential project. Specific tasks and the budget will be determined and approved in the AWP.

Year Four (2018)

Coeur d'Alene Lake Fisheries Public Education and Outreach Project

This project is intended to educate and inform the public about fishery measures implemented at the Post Fall HED and about the measures to minimize public impacts on native fish. Actions include maintenance and revision of the existing signs, kiosks, bulletin boards, revising and printing of the Spokane River Drainage brochure, and other updates as appropriate. Specific tasks and the budget will be determined and approved in the AWP.

Native Salmonid Habitat Protection and Enhancement Project

This project benefits adfluvial and fluvial native salmonid westslope cutthroat trout, bull trout and other species through the protection and conservation of key habitat. An active search to identify potential properties for easements or restoration opportunities will be pursued as appropriate. Specific tasks and the budget will be determined and approved in the AWP.

Recreation Fishery Project

This project is expected to provide recreational angling opportunity and reasonable public access near the Post Falls Project area. This includes catch-out-pond maintenance and

fish stocking to help provide alternative angling opportunities that will not conflict with native salmonid restoration efforts or the requirements of federally listed species. The AWP includes stocking trout into Spicer Pond, Steamboat Pond and Falls Park Pond. Specific tasks and the budget will be determined and approved in the AWP.

Fishery Assessment and Monitoring Project

This project benefits adfluvial and fluvial native salmonid westslope cutthroat trout, bull trout and other species through research, evaluation and monitoring of habitat and/or populations. Assessment or monitoring actions to identify specific resource protection or enhancement projects may be pursued. Specific tasks and the budget will be determined and approved in the AWP.

Year Five (2019)

Coeur d'Alene Lake Fisheries Public Education and Outreach Project

This project is intended to educate and inform the public about fishery measures implemented at the Post Fall HED and about the measures to minimize public impacts on native fish. Actions include maintenance and revision of the existing signs, kiosks, bulletin boards and other updates as appropriate. Specific tasks and the budget will be determined and approved in the AWP.

Native Salmonid Habitat Protection and Enhancement Project

This project benefits adfluvial and fluvial native salmonid westslope cutthroat trout, bull trout and other species through the protection and conservation of key habitat. An active search to identify potential properties for easements or restoration opportunities will be pursued as appropriate. Specific tasks and the budget will be determined and approved in the AWP.

Recreation Fishery Project

This project is expected to provide recreational angling opportunity and reasonable public access near the Post Falls Project area. This includes catch-out-pond maintenance and fish stocking to help provide alternative angling opportunities that will not conflict with native salmonid restoration efforts or the requirements of federally listed species. The AWP includes stocking trout into Spicer Pond, Steamboat Pond and Falls Park Pond. Specific tasks and the budget will be determined and approved in the AWP.

Fishery Assessment and Monitoring Project

This project benefits adfluvial and fluvial native salmonid westslope cutthroat trout, bull trout and other species through research, evaluation and monitoring of habitat and/or populations. Assessment or monitoring actions to identify specific resource protection or enhancement projects may be pursued. Specific tasks and the budget will be determined and approved in the AWP.

6.0 ENDANGERED SPECIES ACT

During the Spokane River Project relicensing process FERC consulted with the USFWS in regard to threatened or endangered species and their critical habitats that may be affected by the Post Falls HED. FERC submitted its initial biological assessment to the USFWS on January 31, 2007 (FERC 2006). On July 31, 2008 the USFWS concurred with FERC that issuance of new License is **“not likely to adversely affect”** bull trout or bull trout critical habitat (USFWS 2008).

On October 18, 2010, the USFWS issued a final rule for the revised designation of critical habitat for bull trout that included Coeur d’Alene Lake, the Coeur d’Alene River, the St. Joe River and selected tributaries as critical habitat for bull trout (USFWS 2010). In August of 2014 the USFWS released for public review the “Revised Draft Recovery Plan for the Coterminous United States Population of Bull Trout *Salvelinus confluentus*” (USFWS 2014). The USFWS assesses proposed projects during the annual review process.

7.0 REFERENCES

- Avista. 2015. Five-Year Fishery Protection and Enhancement Plan 2010-2014 Summary Report (In Process). Avista Corporation. Spokane, WA
- Avista. 2010a. Coeur d'Alene Lake Fisheries Public Education and Outreach Program. Avista Corporation. Spokane. WA.
- Avista. 2010b. Five-Year Fishery Protection and Enhancement Plan. Avista Corporation. Spokane, WA.
- FERC. 2009. Order Issuing New License and Approving Annual Charges For Use of Reservation Lands. Federal Energy Regulatory Commission. Project Nos. 2545-091 issued June 18, 2009. Washington DC.
- FERC. 2007. Final Environmental Impact Statement Spokane River and Post Falls Hydroelectric Projects. Washington DC.
- FERC. 2006. Draft Biological Assessment for Threatened and Endangered Species Listed or Proposed for Listing Under the Endangered Species Act and Potentially Affected by the Federal Energy Regulatory Commission Relicensing of the Spokane River Hydroelectric Projects. Washington, DC.
- IDFG. 2013a. Management Plan for the Conservation of Westslope Cutthroat Trout in Idaho. Idaho Department of Fish and Game Fisheries Bureau. Boise, ID.
- IDFG. 2013b. Fisheries Management Plan 2013 – 2018. Idaho Department of fish and Game. Boise, ID.
- IDEQ. 2008. Idaho Department of Environmental Quality Certification Under Section 401 of the Federal Clean Water Act. Issued June 5, 2008.
- Kleinschmidt. 2004. Coeur d'Alene Lake Basin Bull Trout and Westslope Cutthroat Trout Protection, Mitigation & Enhancement Plan. Kleinschmidt. PA
- McIntyre, J.D. and B.E. Rieman. 1995. Westslope cutthroat trout in conservation assessment for inland cutthroat trout. General Technical Report RM-256. U.S. Department of Agriculture, Forest Service, Rocky Mountain Forest and Range Experiment Station, Fort Collins, Colorado. M.K. Young, Tech. Ed. pp 1-15.
- PBTAT. 1998. Draft Coeur d'Alene Lake Basin bull trout problem assessment. Panhandle Bull Trout Technical Advisory Team. Prepared for the State of Idaho. 73 pp.

- Rich, B.A. 1992. Population dynamics, food habits, movement and habitat use of northern pike in the Coeur d'Alene Lake System, Idaho. Completion Report F-73-R-14, Subproject Number VI, Study Number 3. Idaho Department of Fish and Game, Boise, Idaho. 97 pp.
- U.S. Fish and Wildlife Service (USFWS). 2014. Revised Draft Recovery Plan for the Coterminous United States Population of Bull Trout (*Salvelinus confluentus*) U.S. Fish and Wildlife Service, Portland, Oregon.
- U.S. Fish and Wildlife Service (USFWS). 2010. Designation of Critical Habitat for Bull Trout (*Salvelinus confluentus*) for the Coterminous United States; Final Rule. U.S. Fish and Wildlife Service, Portland, Oregon.
- U. S. Fish and Wildlife Service (USFWS). July 31, 2008. Letter of concurrence with “Not Likely to Adversely Affect” Determination to Kimberly D. Bose, Secretary from Rich Torquemada. Spokane, WA
- Weitkamp, D. E. 2008. Fisheries Resources Additional Analysis and Supplemental Information on Bull Trout and Bull Trout Critical habitat in the Coeur d’Alene Lake Basin. Parametrix, Inc. Bellevue, WA.
- Weitkamp, D.E. 2003. Summary Review, Predation on cutthroat trout in Coeur d'Alene. Report by Parametrix, Inc.

APPENDIX A

Consultation Record

Avista's Letter to Idaho Department of Fish and Game



February 13, 2015

Jim Fredericks
Idaho Department of Fish and Game
2750 Kathleen Ave
Coeur d'Alene, ID 83814

**Subject: Spokane River Project, FERC Project No. 2545
 Five-Year Fishery Protection and Enhancement Plan 2015 - 2019**

Dear Mr. Fredericks:

Avista, in accordance with the Spokane River Hydroelectric Project License, issued by the Federal Energy Regulatory Commission (FERC), implemented the first Five-Year Fishery Protection and Enhancement Plan (Plan) between 2010 and 2014. The Plan was developed subject to Ordering Paragraph D of the FERC License, which incorporated the Idaho Department of Environmental Quality (IDEQ) Certification under Section 401 of the Federal Clean Water Act as Appendix A. Appendix A, Section VII, Exhibit 1 of the License states that Avista will develop and implement five-year fishery protection and enhancement plans, which are to be approved by the Idaho Department of Fish and Game (IDFG) prior to implementation.

Avista has updated the Plan to identify measures that it will implement between 2015 and 2019 and is submitting the "Five-Year Fishery Protection and Enhancement Plan, 2015-2019" to IDFG for approval. Appendix A, Section VII, Exhibit 1 of the License also states that IDFG will consult with the IDEQ and the U.S. Fish and Wildlife Service regarding the updated Plan prior to approving it.

With this, please review the enclosed Plan and provide me with your comments, if you have any, or your approval, by March 30, 2015. Avista will provide the IDFG approved plan to FERC, and upon FERC approval, will implement the Plan.

If you have any questions, please feel free to contact me by telephone at (509) 495-8612 or by email at tim.vore@avistacorp.com.

Sincerely,

A handwritten signature in blue ink that reads "Tim Vore".

Tim Vore
Environmental Specialist

Enclosure

cc: Robert Steed, IDEQ
 Speed Fitzhugh, Avista

Idaho Department of Fish & Game's Consultation with Idaho Department of Environmental Quality and U.S. Fish and Wildlife Service

Subject: FW: Five-Year Fishery Protection and Enhancement Plan 2015-2019
Attachments: Cover Ltrr 5Year Fisheries Protection Plan 2-13-15.pdf; PF Fishery Plan 2015 to 2019.pdf

From: Fredericks, Jim [<mailto:jim.fredericks@idfg.idaho.gov>]
Sent: Friday, February 13, 2015 11:57 AM
To: Robert Steed; scott_deeds@fws.gov
Subject: FW: Five-Year Fishery Protection and Enhancement Plan 2015-2019

Hey Gents

Evidently it's my responsibility to run this 5-year plan by you two as reps of IDEQ and USFWS. I've met with Tim a couple of times to work out the general plan and include specifics where we can. As I suspect you both recall from the last go around, the 5-year plan is pretty broad, with the details coming in the annual implementation plans. We did include some specific projects that we anticipate completing. Scott, we are proposing to contribute funding to the Red Ives creek diversion barrier as a BLT habitat enhancement project.

Please let me know via e-mail if you have comments about the plan before Feb 28th. If not, I'll let Tim know we're all good with it. Call me if we need to discuss anything. Thanks guys,

Jim Fredericks,
Panhandle Region Fishery Manager
Idaho Department of Fish and Game
2885 W. Kathleen Ave,
Coeur d'alene, ID 83815
208-770-3761
jim.fredericks@idfg.idaho.gov

From: Vore, Tim [<mailto:tim.vore@avistacorp.com>]
Sent: Friday, February 13, 2015 10:25 AM
To: Fredericks, Jim; Corsi, Charles
Cc: Fitzhugh, Speed (Elvin); Goloborodko, Yelena
Subject: Five-Year Fishery Protection and Enhancement Plan 2015-2019

Good morning-

Please see the attached cover letter and the "Five-Year Fishery Protection and Enhancement Plan 2015-2019" for your review and approval.

If you have any questions or comments on this plan you can reach me at telephone number (509) 495-8612.

Thank you,

Tim Vore
Environmental Specialist



file:///C:/Users/ygg3473/Desktop/FW%20Five-Year%20Fishery%20Protection%20and%20Enhancement%20Plan%202015-2019.htm[04-08-2015 9:25:27 AM]

Idaho Department of Fish and Game's Letter to Avista



IDAHO DEPARTMENT OF FISH AND GAME

PANHANDLE REGION
2885 West Kathleen Avenue
Coeur d'Alene, Idaho 83815

C.L. "Butch" Otter/Governor
Virgil Moore/Director

March 30, 2015

Mr. Elvin "Speed" Fitzhugh
Avista Corporation
1411 E. Mission Avenue
P O Box 3727
Spokane WA 99220-3727

Dear Speed:

REFERENCE: FERC PROJECT #2545/AVISTA – SPOKANE RIVER FISHERY
PROTECTION AND ENHANCEMENT PLAN

We have reviewed the above referenced Fishery Protection and Enhancement Plan to address fishery resource needs associated with the Post Falls HED. We have also consulted with the US Fish and Wildlife Service, and with the Idaho Department of Environmental Quality, on the merits of the plan.

Based on this review and consultation, we believe the plan is ready for implementation and provide our approval. We look forward to working with Avista to implement the plan.

Sincerely,

A handwritten signature in blue ink, appearing to read "Chip Corsi".

Chip Corsi
Regional Supervisor

CEC:nk

C: Sharon Kiefer, Director's Office
Ben Connard, USF&WS, Spokane
Dan Redline, IDEQ, Coeur d'Alene

Keeping Idaho's Wildlife Heritage

Equal Opportunity Employer • 208-769-1414 • Fax: 208-769-1418 • Idaho Relay (TDD) Service: 1-800-377-3529 • <http://fishandgame.idaho.gov>

APPENDIX B

Fishery Project Ranking Criteria

APPENIX B
Five-Year Fishery Protection and Enhancement Plan
Fishery Project Ranking Criteria

Proposed Project:

Project reviewers are the IDFG, IDEQ, USFWS and Avista, with projects securing up to a maximum of 17 points

- Area that the enhancement project will encompass (3 points):
 1. Direct association to Post Falls HED* (3 pts).
 2. Within Post Falls HED FERC Project boundary (2 pts).
 3. Adjacent to HED Project boundary-within basin (1 pt).
 4. Not in HED Project basin (project ineligible).
- Fish species (i.e. resources) that are expected to benefit from the project (4 points):
 1. Multiple species - Adfluvial bull trout and westslope cutthroat trout (above Post Falls HED) (4 pts).
 2. Single species – Adfluvial bull trout, westslope cutthroat or fluvial redband rainbow trout (Spokane R. below Post Falls HED) (3 pts).
 3. Fluvial or resident westslope cutthroat trout (2 pts).
 4. Indirect benefit to native fish* (1 pt).
 5. No native fish species will benefit (project ineligible).
- Expected benefits relative to cost (2 points):
 1. Project benefits exceed costs (2 pts).
 2. Project benefits about equal to cost (1 pt).
 3. Project costs exceed benefits (project ineligible).
- Project consistency with existing fishery management/recovery plans (2 points):
 1. Project is consistent with existing fishery management plans, recovery plans, and/or designated beneficial uses (2 points).

2. Project is not consistent with existing fishery management or recovery plans goal and objectives (Project ineligible).
- Cost sharing or in-kind services (2 points): Percent of the project that will be funded from other (non Avista funding) revenue sources and/or in-kind services.
 1. Greater than or equal to 25% of the total project cost (2 points).
 - Project provides recreational benefit (2 points):
 1. Project provides direct recreational benefit for native species or improves conditions for native species (2 pts).
 2. Project provides recreational benefits, without direct benefit to native species (1 pt).
 - Project has monitoring component (2 points):
 1. Project has well defined monitoring component that will help determine effectiveness (2 pts).

* *Foot Notes:*

Directly associated with the Project:

- a) *Refers to fishery protection and enhancement projects that lie within or immediately adjacent to the FERC Project boundary, or*
- b) *Fishery protection and enhancement projects for migratory fish that spend a portion of their life cycle within the Project boundary.*

Native fish species are: bull trout, westslope cutthroat trout within the Project area and wild rainbow trout that exist in the Spokane River downstream of the Post Falls HED.