



Equity Advisory Group – Equity Lens Session

Meeting Date: 09/18/2024
 Time: 12:00 pm – 1:30 pm
 Location: Zoom Meeting

Attendees:

Facilitator	Present	EAG Member	Member Organizations
Amber Lenhart	<input type="checkbox"/>	Clyde Abrahamson	Spokane Indian Housing Authority
Avista Team Member	<input type="checkbox"/>	Margee Chambers	Spokane Clean Air
Kelly Dengel	<input checked="" type="checkbox"/>	Connie Kliewer	NEWESD101
Ana Matthews	<input type="checkbox"/>	Clair Trapp	Rural Resources
Dan Blazquez	<input type="checkbox"/>	Joe Reilly	SNAP
Amanda Ghering	<input checked="" type="checkbox"/>	KJ January	Spectrum
Kristine Meyer	<input type="checkbox"/>	William von Bracht	Othello, school English as 2nd language
Kelsey Solberg	<input type="checkbox"/>	Michele Bennington	Community member at large
Karen Cash	<input type="checkbox"/>	Brook Beeler	Department of Ecology Eastern Region
John Lyons	<input type="checkbox"/>	Jupiter McGee	Sunrise Spokane Affiliation (youth led) (Facebook)
Tom Pardee	<input type="checkbox"/>	Vanessa Strange	Spokane Public Library
Annette Brandon	<input checked="" type="checkbox"/>	Tami Dillion	Providence
	<input checked="" type="checkbox"/>	Latrice Williams	Community Member/ WA state board of Equity
	<input type="checkbox"/>	Cindy Kimmet	Takesa Village
	<input type="checkbox"/>	Carmen Groom	SNAP
	<input type="checkbox"/>	Sandra Childers	Rural Resources
	<input checked="" type="checkbox"/>	Jean Kindem	Aging & Long-Term Care of Eastern Washington
	<input checked="" type="checkbox"/>	Karen Boone	Red Cross
		Guests	
		Amanda Parrish	Lands Council

Agenda

- I. Welcome & Introductions2
 - Overview of Meeting: Rules and Intent2
- II. Partner Share2
- III. SpoCanopy Update2
- IV. Named Community Investment Fund Update6
- V. Your Support Team and Next Meeting9
- VI. Additional Resources9

EAG Equity Lens Session Meeting Notes

I. Welcome & Introductions

Overview of Meeting: Rules and Intent

II. Partner Share

- Aging and long-term care is moving to the new Rock Point facility in October, there will be an open house, provides them with more space to support their clients.
- Spectrum has teamed up with INBA to host an out in the park event at Mission Park this Saturday 9/21/24 from noon to 4 pm playing games and having a fun family event.

III. SpoCanopy Update

Amanda Parrish, executive director at the non-profit lands council, their goal is to preserve the forests, waterways, and natural resources in Washington through several initiatives outlined below.

Water to restoration work: active in restoring waterways with native plant buffers.

Environmental education: helps to fund outdoor experiences in junior high and high schools through grants with the department of ecology.

Public Land work: provides recreational, wildlife habitat, clean water, opportunities to hunt, fish, and gather. Colville national forest is the most productive forest in the entire unties states, harvesting logs so new one can grow etc.,

Climate Justice: works with diverse community partners to develop equitable solutions to the region's unique challenges. Focuses on policies related to regional climate change effects and mitigation potentials.

SpoCanopy: planting free street trees to low-income neighborhoods, this is a community driven program to equitably increase the urban canopy in Spokane. Neighborhoods can choose the type of tree in a list of approved trees, there are no costs, does not need to own the home, the tree is provided, and the resident is a partner in watering that tree over the time, but the tree maintenance is provided by the Lands Council.

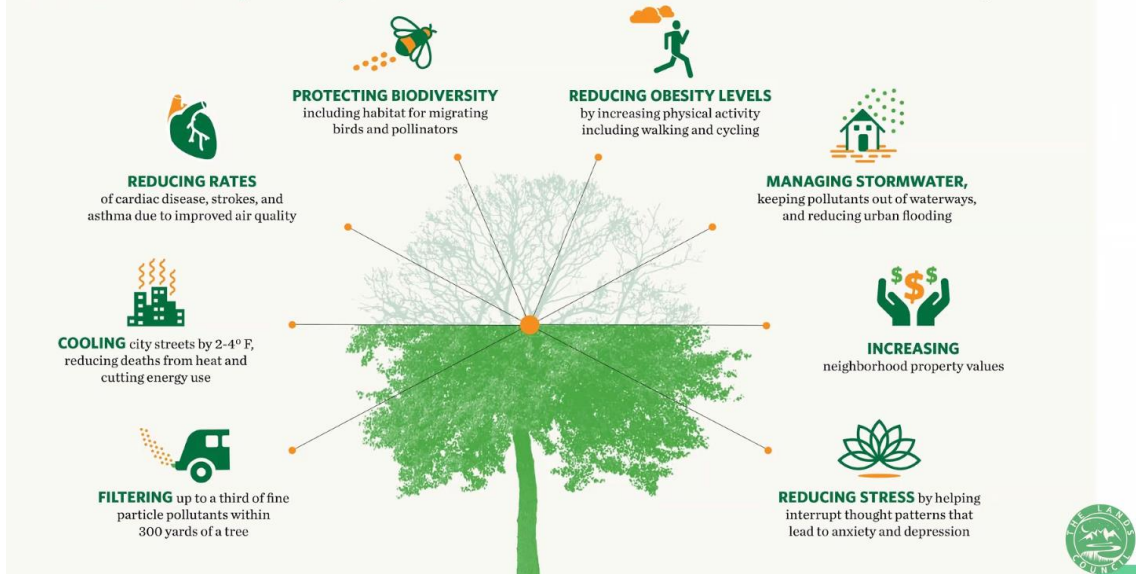
Spokane City = \$6M received in grants to support initiative

Spokane County = \$6M received in grants to support initiative

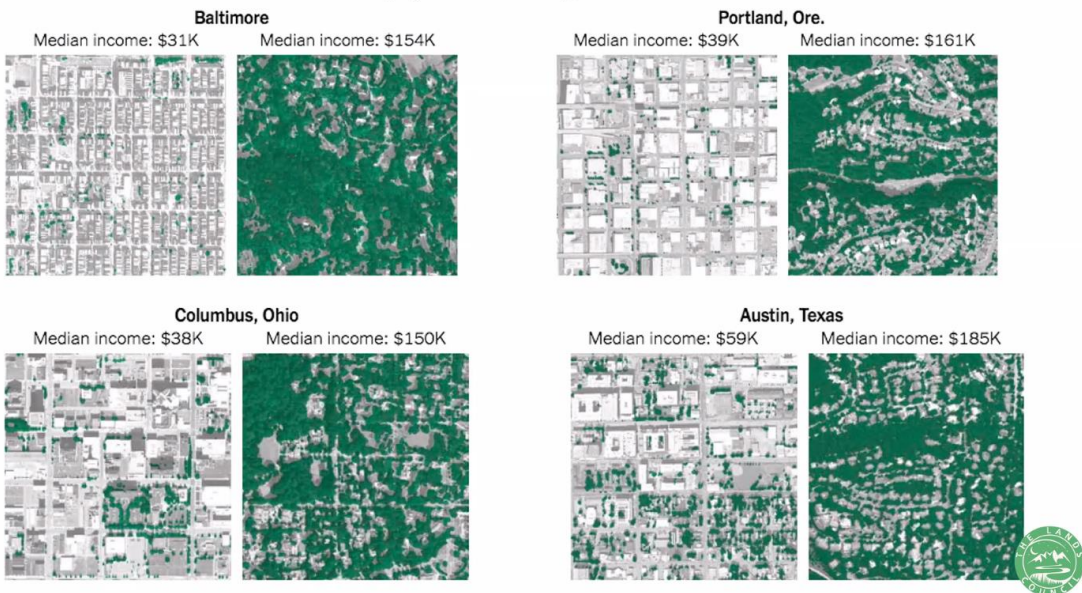
Discussed benefits of urban trees

Benefits of Urban Trees

Research has linked the presence of urban trees to...



Trees as an Equity Issue: Median Income and Canopy Coverage



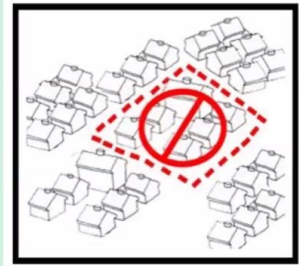
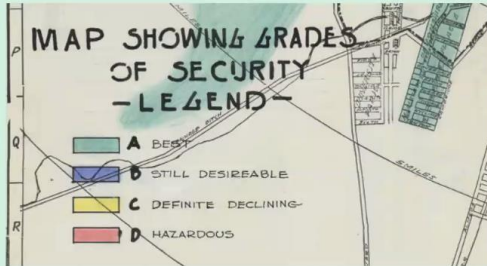
New York Times article, higher median income equates to more trees and the same goes for Spokane. The lower the income the fewer trees there typically are which leads to higher temperatures in and around homes.

Discussed redlining and how there were policies to deny investments and resources in certain areas and those would be outlined in red on maps which is no longer a legal practice, but there is a lot of catch up that we need to do to invest in these communities now.

Facilitator: There is also a huge difference in life expectancy between these neighborhoods (e.g., Riverside [downtown] vs. Southgate [south hill])! This is a great presentation on one of the legacy impacts of redlining.

Quick history: What is **redlining**?

Systemic denial of services and resources to certain communities and neighborhoods either by direct removal, denial of resources or sudden increase of prices.



SpoCanopy – Expo Forest



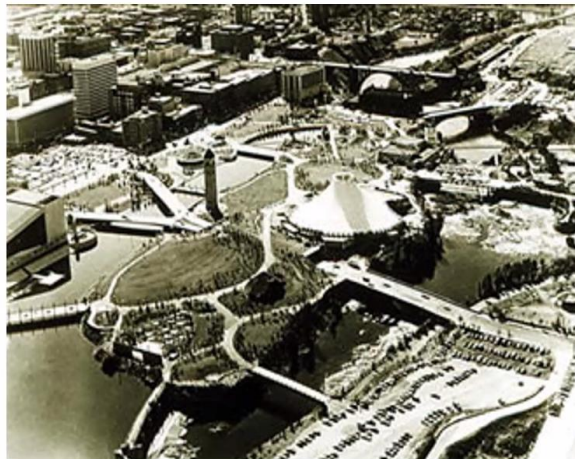
50 years ago, Expo '74 planners built Riverfront Park, planting trees for future generations to appreciate. Today, any mature tree you see in Riverfront Park was a part of the planting effort 50 years ago.

Spokane was the small city to ever host a world fair, they chose environmental stewardship as their foundation and planted many trees. In honor of this legacy the Lands Council wanted to expand the forest that was provided

SpoCanopy Expo-Forest



Before Expo '74



After Expo '74



Even today people use these trees for shade during events at the park. The Land Council and partners planted more trees this May in honor of expo 74 through funding received from Avista's NCIF. Goal was to plant 500 trees, planted 50 each year previously, they planted 782 trees during this event.

Any guesses on how many trees we planted?



782!!!

- 421 Ponderosa Pine (plus an undetermined amount of Rocky Mountain Juniper) seedlings
- 70 Ponderosa Pines (larger stock)
- 70 Western Larch
- 40 Austrian Pine
- 36 Autumn Brilliance Apple Serviceberry
- 35 Espresso Kentucky Coffee tree
- 35 Harvest Gold Linden
- 20 Forest Green Italian Oak
- 20 Honey Locust
- 12 English Oak
- 10 Norway Maple
- 8 Douglas Fir
- 3 Emerald Sunshine Elms
- 2 Eastern Redbuds



How to get involved

- **Donate** to keep this program growing!
- **Volunteer** and plant trees
 - October 18th – SpoCanopy
 - October 19th – Cool Canopy
- **Share** this opportunity with community members, put us in touch with people that may want to plant.
- **Contact Us:** [LandsCouncil.org](https://landscouncil.org)
jbrant@landscouncil.org
aparrish@landscouncil.org



Facilitator: It's so great to see youth engaged in this effort! That's something we've been talking about in this group.

Member: This is wonderful, I love this program, what are the best trees to plant that are the right tree for the right place?

Lands council: Check with us before you buy a tree, we have trees and can offer advice on the best trees. Blue Moon is my favorite arborist retailer.

Company: As someone who lives in a neighborhood with a minimal tree canopy, I LOVED seeing the tree planting happening in my neighborhood this spring. Kudos to TLC for making our neighborhoods cooler and more walkable!

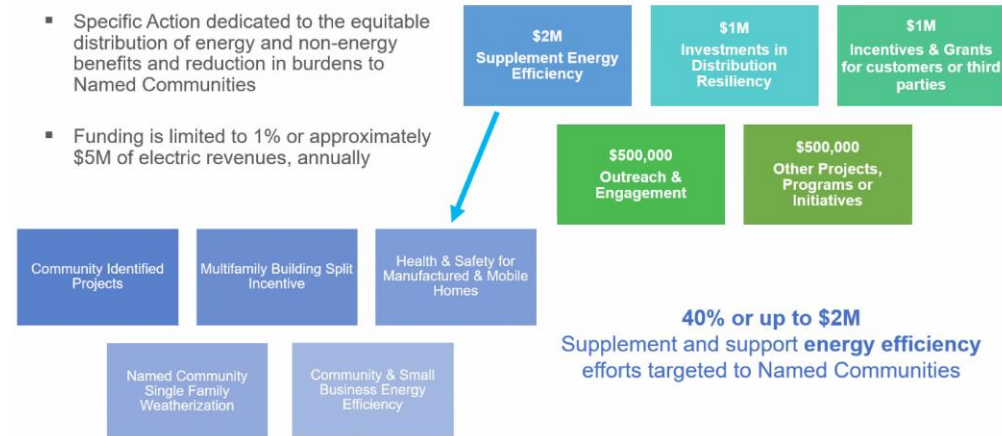
Member: Thank you for this information, I was not aware of all of this information, and you connected all the dots.

Member: I will be sharing this with my organization and reach out to see how we can benefit from some trees or how we can support volunteerism in this space.

IV. Named Community Investment Fund Update

Refresher on the NCIF:

Named Communities Investment Fund



Discussed EAG NCIF prioritization table and how we use this table each time we review applications.

EAG NCIF Prioritization

Rank	Initiatives
1	Focus efforts on improving energy efficiency (and EE awareness/education) for schools, community centers, and other places where Named Communities spend time
1	Focus efforts on improving energy efficiency for Spokane Tribe partners
2	Improve energy efficiency in multi-family and mobile home communities
3	Increase tree canopy and shade in Named Communities (consider tradeoffs with solar)
3	Increase access to energy efficient products and appliances for Named Communities
4	Increase awareness of and engagement in energy efficiency programs while also meeting whole-house needs through community-based partnerships and referrals to services
5	Set aside funds to match for energy efficiency grant applications for community organizations and tribal partners (could have higher feasibility)
6	Focus efforts on improving energy efficiency for community members without stable housing (consider including with other initiatives)

Discussed how we review and discuss applications in a competitive environment as outlined below:

Factors for NCIF Consideration

Equity	Customer Benefit Indicators	Implementation Plan Specific Actions	Equity Advisory Group Initiatives
<ul style="list-style-type: none"> Affordability Access to Clean Energy Community Development Energy Security Environmental Public Health 	<ol style="list-style-type: none"> Participation in Company Programs Number of households with a High Energy Burden (>6%) Availability of Methods/Modes of Outreach and Communication Transportation Electrification Named Community Clean Energy Investments in Named Communities Energy Availability Energy Generation Location Residential arrearages and disconnects for nonpayment Outdoor Air Quality Greenhouse Gas Emissions Employee Diversity Supplier Diversity Indoor Air Quality 	<ul style="list-style-type: none"> Community Identified Project Multifamily Building Split Incentive Health & Safety for manufactured and mobile home Single Family Weatherization Community Energy Assistance Small Business Energy Assistance <p style="text-align: center;"><i>Company Programs</i></p>	<p>Energy Efficiency in Named Communities</p> <ol style="list-style-type: none"> Improved awareness and energy efficiency for Spokane Tribe, multi-family and manufactured homes Increased Tree Canopy Increased access to products and appliances Increased awareness and engagement in EE programs Matching funds for EE grant applications Improved EE for those without stable housing <p style="text-align: center;"><i>Community Identified EE Projects</i></p>

and Non-Energy Benefits

Provided an overview of commitments made to date on NCIF projects, we are almost fully subscribed for 2024 and are now looking at projects that are trickling into 2025.

Investments in Named Communities, Inception through August 2024

Energy Efficiency		Community & Resiliency	Combined
Residential Homes	Health & Safety for Manufactured Homes	Resiliency	Window replacement for church
Affordable housing window replacement	KW Energy duct sealing	Spokane County Community Center	Renovation of Food Bank serving rural community
SNAP Pine Villa affordable housing	Weatherization improvements at manufactured/mobile home parks	Rural community Town Hall & Community Center	Mini-splits for community center in Whitman County
Heat Pumps for low-income homeownership program	Buildings	Rural town water supply	
Window and slider replacement at affordable housing	Nonprofit energy efficiency upgrades Education Building	Community Projects	
Replacement of HVAC housing for urban poor	Spokane Tribe Audits	Tree Plotter software subscription	
Lighting Upgrades	Corner laundry for unhoused individuals	Air conditioner distribution by community action and aging & long-term care organizations	
Rural School District and Church	Programs	Medical Equipment battery backup pilot	
Nonprofit owned and operated ice arena	Multi-Family – deep retrofits	Clean air in school educational project	
Food Bank		Tree Planting in Spokane County	
Homeless Shelter		Workforce Development	
Workforce Development		Job training program for women	
Community Action Agency Workforce Development Training		Workforce and non-profit career development for unhoused individuals	
		Outreach & Engagement	
		Projects for multi-lingual and planning for underserved customer engagement	

41

We have been sharing a new story each month to share how customers and communities are benefiting from the NCIF and other grants as we partner with other organizations as needed to support each organizations individual needs. Stories can be found on myavista.com through “Avista Connections” and on social media platforms.



Community & Energy Efficiency NCIF Stories online

- [Avista helps Lands Council plant hundreds of trees in Spokane | Avista Connections \(myavista.com\)](#)
- [Spokane mother finds stability and homeownership with community support \(myavista.com\)](#)
- [Say goodbye to leaky ductwork | Avista Connections \(myavista.com\)](#)
- [From homeless to hopeful \(myavista.com\)](#)

New story shared each month!

Discussed specific projects that have been supported by the NCIF. Making homes available to individuals who may not otherwise have been able to afford homes and they are highly energy efficient homes through NCIF grants and traditional appliance rebates. Applying NCIF funds helps to keep the costs of the homes low and affordable for these customers. We have supported 2 homes so far and working on a 3rd now and anticipate 5 homes next year.

NCIF for Affordable Housing & Energy

- Non-profit committed to affordable homeownership for those in need
- House placement in homeowners' cooperative, resident owned community
- Rebate package
- Benefits to home buyer in reduced home costs and high efficiency home



NCIF for Rural Community Resilience



Water during critical events



Community Center Solar

Member: This is really impressive work, thank you
Member: I want to echo this too and to see this come full circle is great. I love that I was a part of this work.
Member: I would love to get a copy pf this presentation. The first pages of the presentation I would love to look at, thank you. I met with Al French last week and he was very interested in this work, and we would love to learn more about what you are doing in this space.
Facilitator: As a reminder, all presentations for the Equity Advisory Group are always available online at [Washington's Clean Energy Future \(myavista.com\)](http://Washington's Clean Energy Future (myavista.com))
Facilitator: You can sign up for the newsletter here: <https://cloud.ask.myavista.com/CEIP-Newsletter-Signup>

V. Your Support Team and Next Meeting

- Next meeting is scheduled for Wednesday October 23rd and Friday October 25th.
- Please sign up for our quarterly newsletter if you have not already and we hope to see you all in October.

VI. Additional Resources

<i>Resource Link</i>	<i>Description</i>
Washington’s Clean Energy Future	Avista page for CETA related activities
Clean Energy Transformation Act	Clean Energy Transformation Act - Washington State Department of Commerce
Chapter 19.405 RCW	Laws and Regulations: Revised Code of Washington Investor-owned utilities
Chapter 480-100 WAC	Laws and Regulations: Washington Administrative Code Investor-owned utilities
WA Energy Strategy	Washington State Energy Strategy
CETA Overview	CETA overview and interim assessment