



Equity Advisory Group

Equity Lens Session #2

Named Communities

Highly Impacted Communities & Vulnerable Populations

January 12th & 14th, 2022

Agenda

Topic	Topic Owner
Welcome & Introductions	Amber
Overview of the Meeting: rules and intent	Amber
Named Communities	Tamara
Highly Impacted Communities Vulnerable Populations	Tamara/Amber
Discussion	Amber
Future Conversations	Tamara
Your Support Team and Next Meeting	Amber

Guest Introductions

- Name
 - Pronouns
- Organization
- Interest in attending



Today's Meeting

Equity Lens Session January 2022

INCREASING LEVEL OF PUBLIC IMPACT				
INFORM	CONSULT	INVOLVE	COLLABORATE	EMPOWER
Public Participation Goal:	Public Participation Goal:	Public Participation Goal:	Public Participation Goal:	Public Participation Goal:
To provide the public with balanced and objective information to assist them in understanding the problems, alternatives, opportunities and/or solutions.	To obtain public feedback on analysis, alternatives and/or decisions.	To work directly with the public throughout the process to ensure that public concerns and aspirations are consistently understood and considered.	To partner with the public in each aspect of the decision including the development of alternatives and the identification of the preferred solution.	To place final decision-making in the hands of the public.



- PROVIDE OVERVIEW OF NAMED COMMUNITIES DEFINITION



- MEETING FORMAT IS INFORMATIVE AND CONSULTATIVE



- WE WANT TO HEAR FROM YOU!

Rules for Engagement

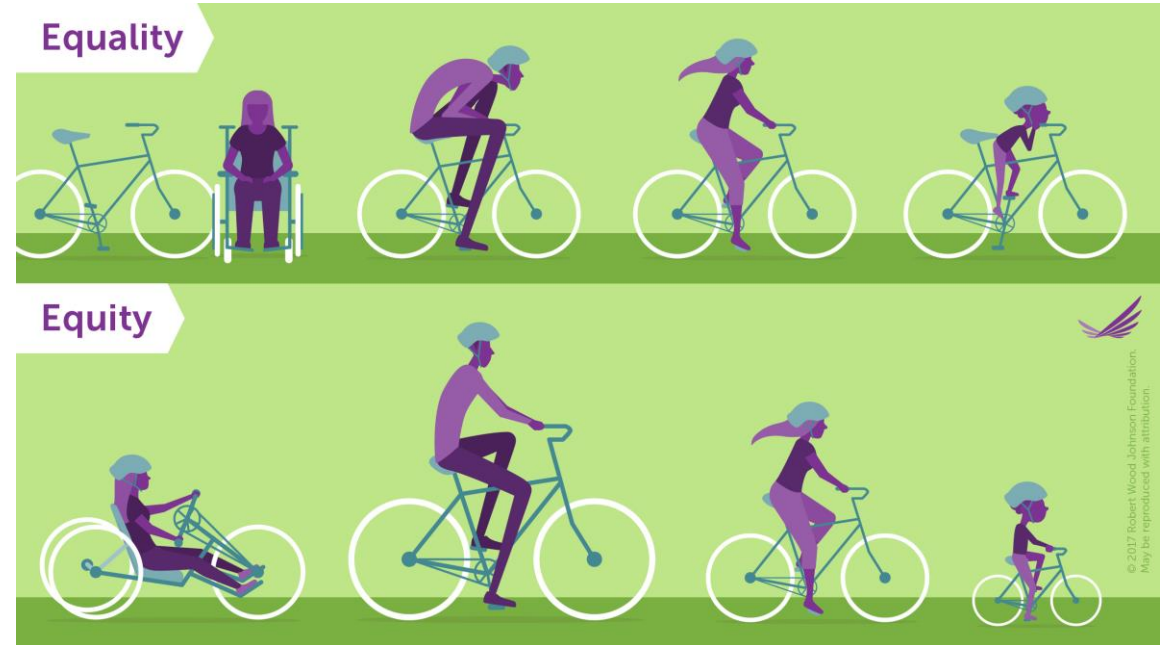


- Encouraged to actively participate in discussions
- Each member will be provided time to speak
- Healthy and civil debate is encouraged
- Members should be open to new ideas and concepts
- Respectful of differing opinions
- Collectively the group should strive to align varying options (e.g., identify shared goals for different perspectives)

Equity in CETA

“Equitable distribution” means a fair and just, but not necessarily equal, allocation intended to mitigate disparities in benefits and burdens, and based on current conditions, including existing legacy and cumulative impacts

- The act of developing, strengthening, and supporting procedural and outcome fairness in systems, procedures, and resource distribution mechanisms to create equitable (not equal) opportunity for all people.
- Equity is distinct from equality which refers to everyone having the same treatment without accounting for differing needs or circumstances.
- **Equity has a focus on eliminating barriers that have prevented the full participation of historically and currently oppressed groups.**



The utility **must** consider and address:

- ✓ Language Barriers
- ✓ Cultural Barriers
- ✓ Economic Barriers



Named Communities

Named Communities

per WAC 480-100-605

Highly Impacted Communities

A Community designated by the Department of Health based on the cumulative impact analysis required by RCW 19.405.140 or a community located in census tracts that are fully or partially on “Indian Country,” as defined in 18 U.S.C. Sec. 1151.

Vulnerable Populations

Communities that experience a disproportionate cumulative risk from environmental burdens due to adverse socioeconomic factors (such as unemployment, high housing costs); and sensitivity factors such as low birth weight and higher rates of hospitalization.

A total of 48 census tracts were identified as Named Communities.

Highly Impacted Communities

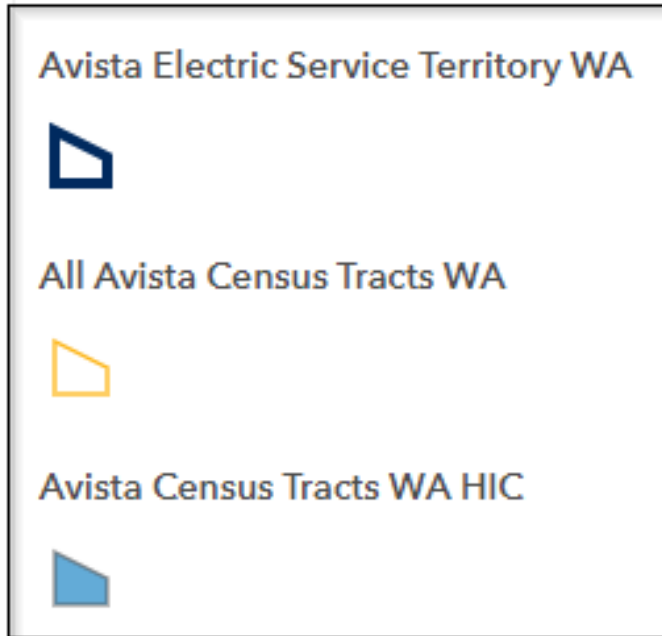
Highly Impacted Communities

- CETA requires the Department of Health (DOH) to determine each utility's Highly Impacted Communities.
- DOH used the combined average score of four categories.
- Those communities that had a resulting score of nine or higher were areas determined to need immediate attention.

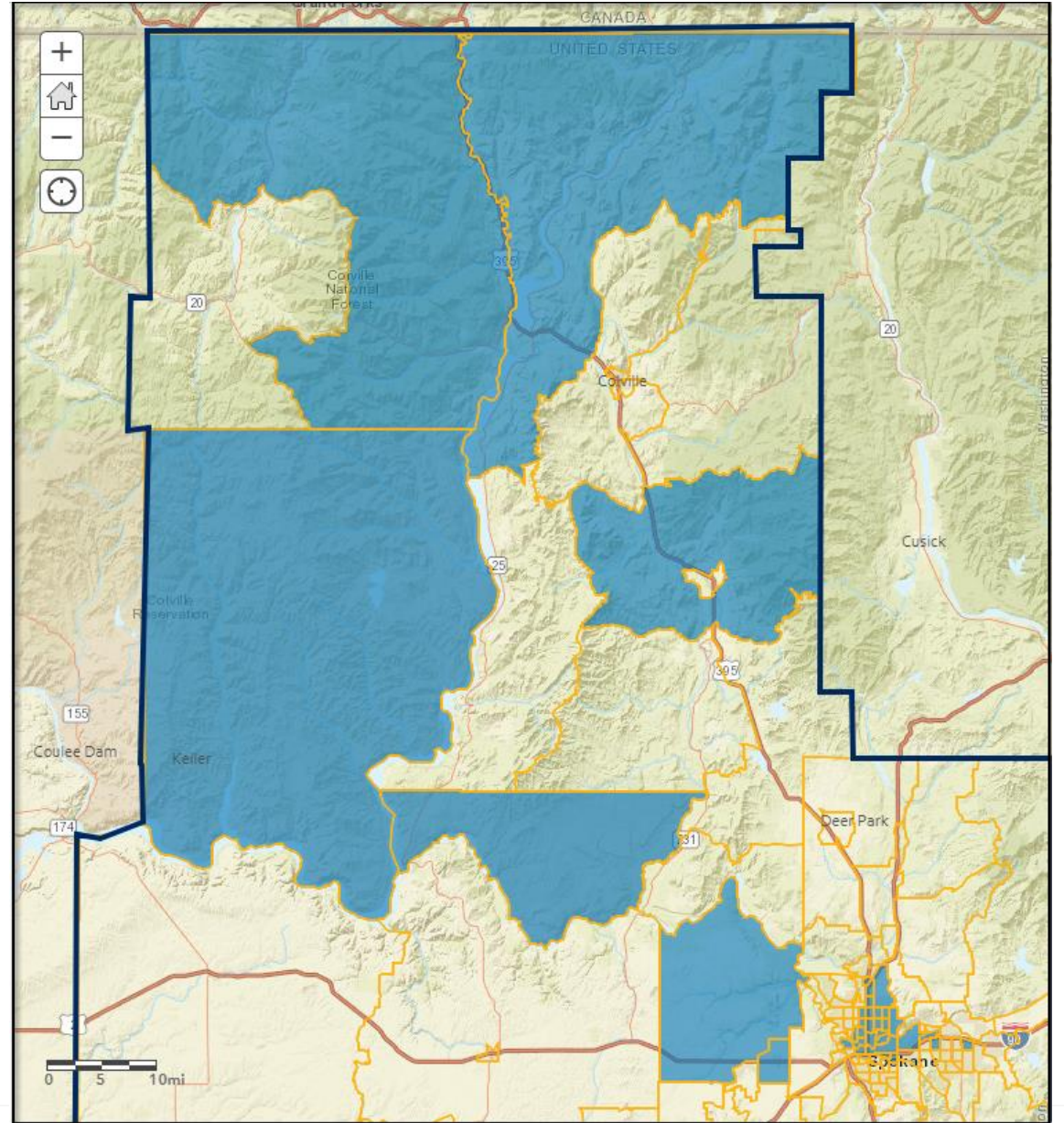
Environmental Exposures	Environmental Effects	Socioeconomic Factors	Sensitive Populations
<ul style="list-style-type: none">○ NOx-diesel emissions○ Ozone concentration○ PM 2.5 concentration○ Populations near heavy traffic○ Toxic releases from facilities	<ul style="list-style-type: none">○ Lead risk from housing○ Proximity to hazardous waste treatment facilities○ Proximity to risk management plan facilities○ Wastewater discharges	<ul style="list-style-type: none">○ Limited English○ No high school diploma○ People of color○ Population living in poverty (<= 185% of federal poverty level)○ Transportation expense○ Unaffordable housing (>30% of income)○ Unemployed %	<ul style="list-style-type: none">○ Death from cardiovascular disease○ Low birth weights

Highly Impacted Communities

Washington Service Territory




- Avista's Washington service territory includes portions of 142 census tracts. Of these, 36 (25.4%) qualified as Highly Impacted Communities.




Highly Impacted Communities

Spokane County

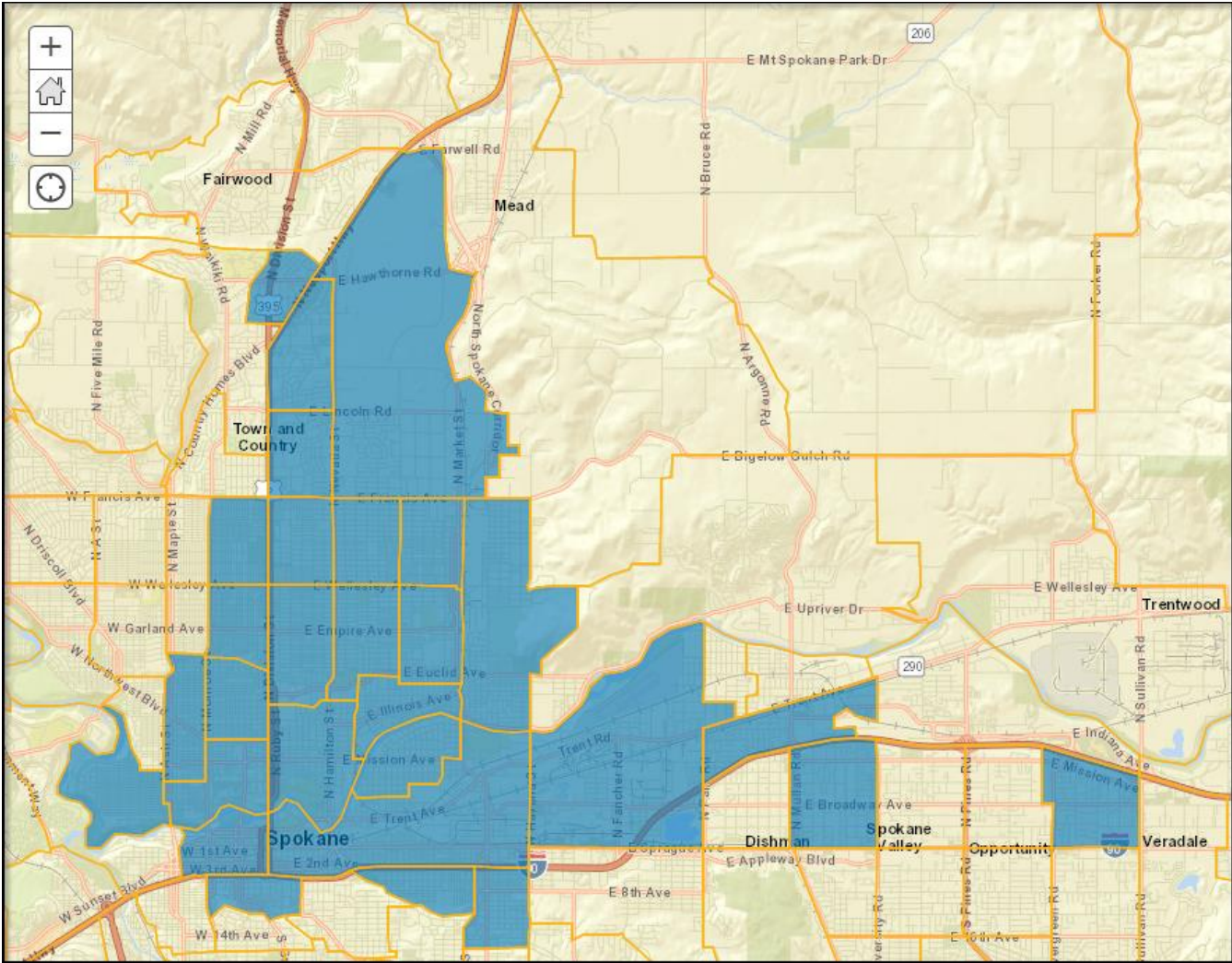

Avista Electric Service Territory WA



All Avista Census Tracts WA

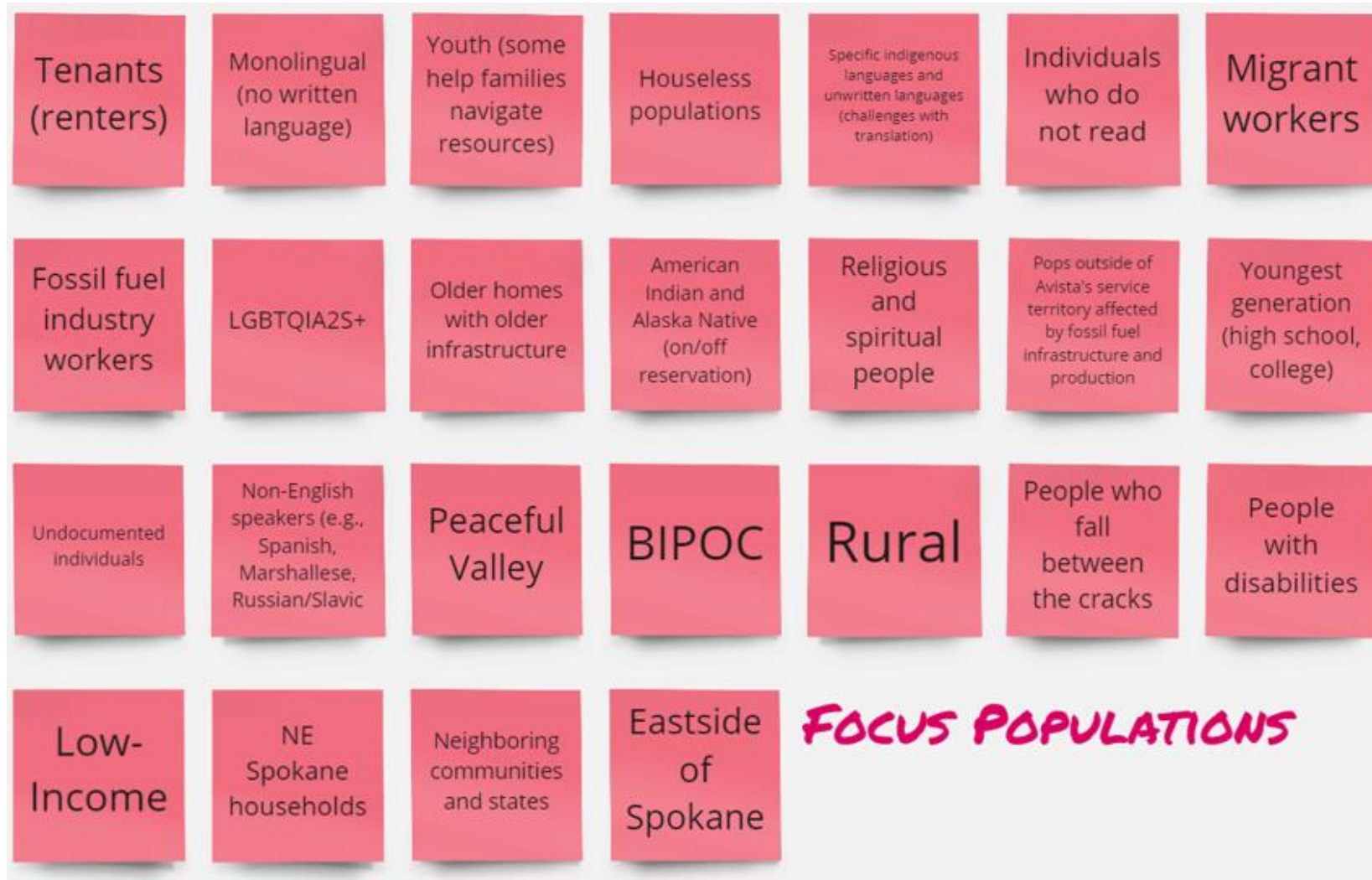


Avista Census Tracts WA HIC



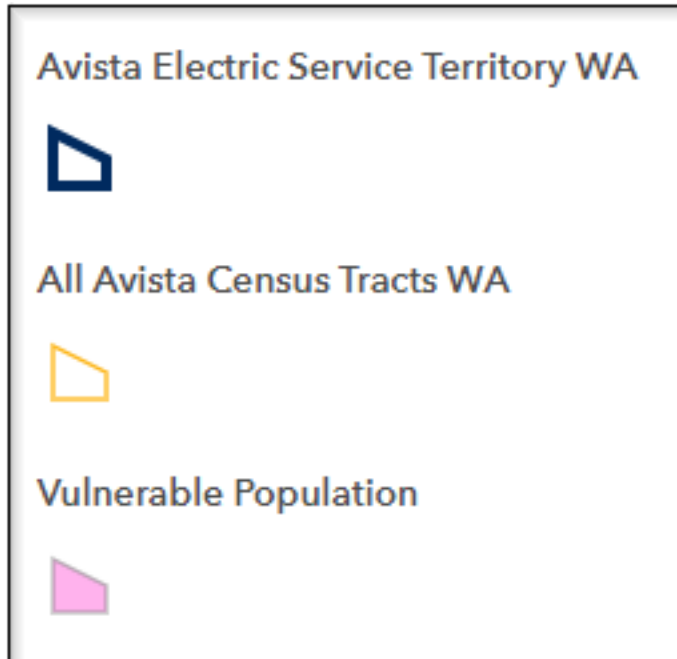
Vulnerable Populations

Who might have the hardest time reaching/receiving benefits?

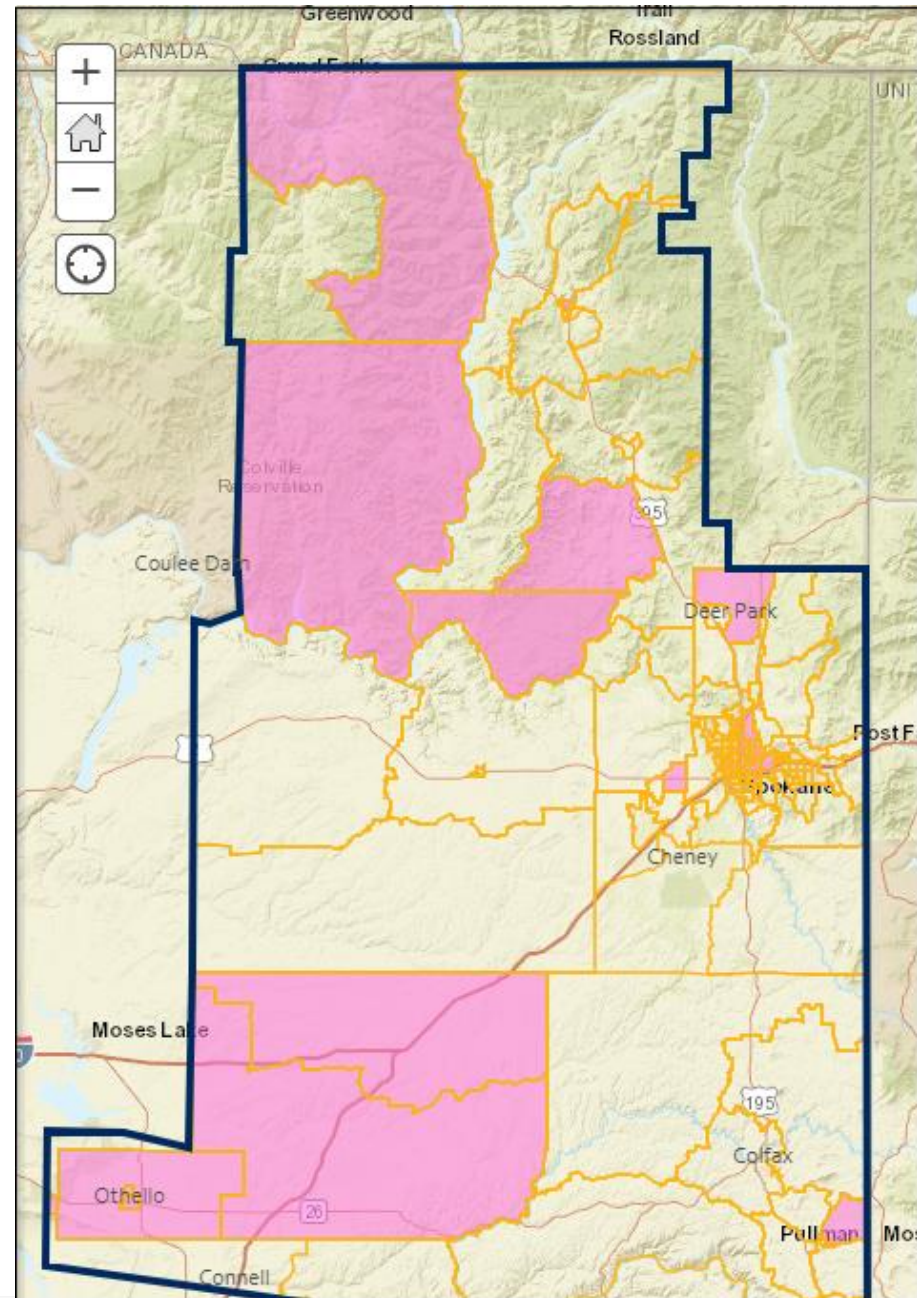


Vulnerable Populations Washington Service Territory

*

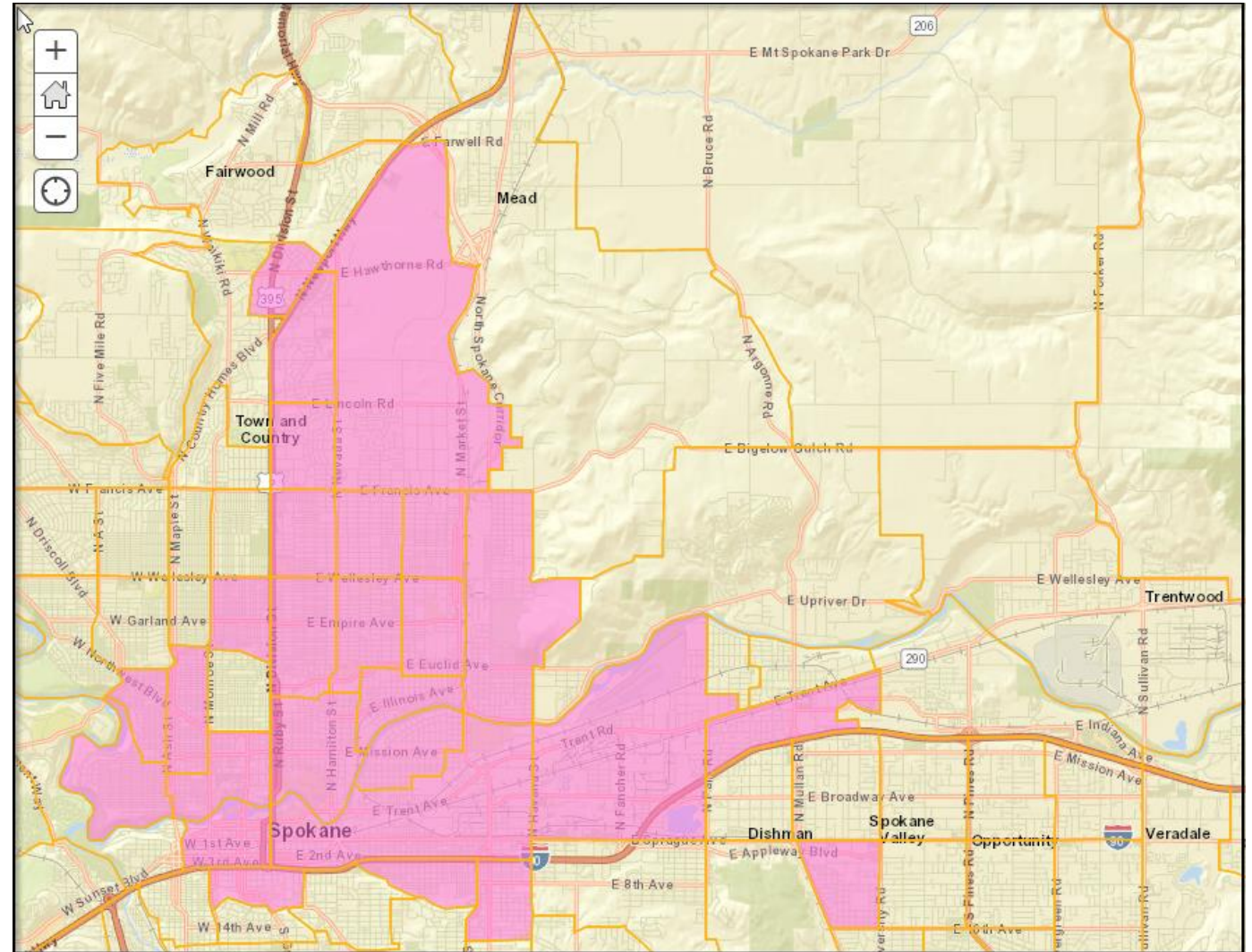
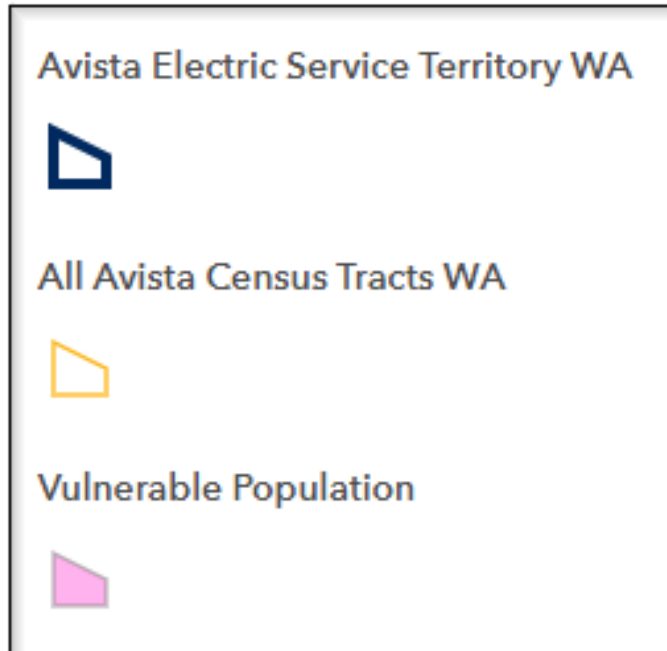


- Vulnerable Populations adds an additional 12 census tract areas.



Vulnerable Populations Spokane County

*



Discussion and Questions

- What questions do you have about “highly impacted communities” or “vulnerable populations?”
- What do both groups share in common? How are they different?
- What does this tell us about who might have the hardest time reaching or receiving benefits?
- How can we be more specific or inclusive?
- What else do you want Avista to know about populations or communities that face barriers?



Future Conversations

Commission | 3rd Party
CEIP Comments

Energy Efficiency
Community
Identified Projects

Avista's Innovation
Lab
(potential on-site tour)

Wildfire Program

Wellpinit Microgrid
Pilot

Automated Metering
Infrastructure
(AMI – Smart Meters)

Next Meeting | Support Team

Evening:
Wednesday,
February 16th @
4:30 to 6:00 pm

Wed. 16 Feb.

Fri. 18 Feb.

Morning: Friday,
February 18th @
7:30 to 9:00 am

Amber Lenhart
Amber.lenhart@gmail.com
509.475.9575

Renee Coelho
Renee.Coelho@avistacorp.com
509.495.8607

Tamara Bradley
Tamara.Bradley@avistacorp.com
509.495.9686

Thank You

